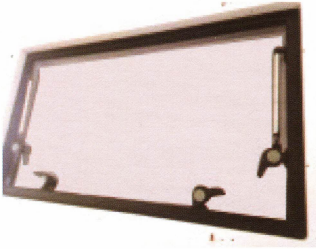


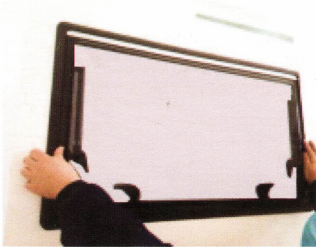
INSTALLATION & INSTRUCTION



01 Check whether the window size match the vehicle installation hole, suitable wall thickness is 22-35mm.



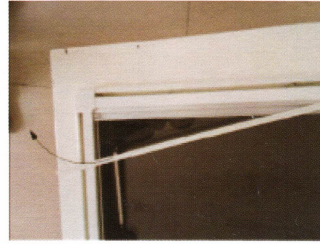
02 For better and stronger adhesion result, recommend to use Polyurethane(PU) sealant. Apply it evenly to the frame.



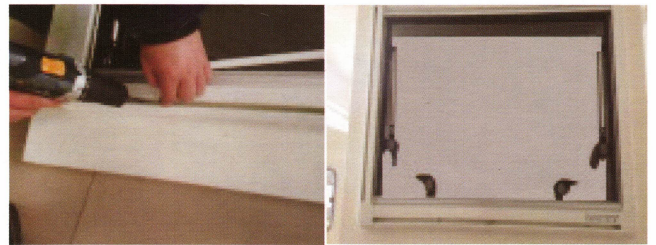
03 The window is aligned with the installation hole and then pushed flat against the installation hole. Another person should push against from the outside until all the screws are fixed.



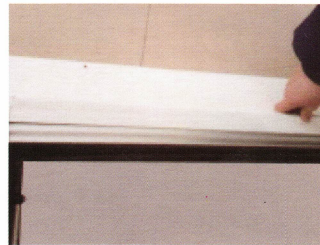
04 To install the window to the vehicle, use cross groove pan head self-tapping screws provided via the installation clips from the inside. Tighten all screws.



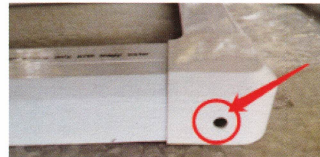
05 Pull the two ends of the white ribbon to take out the PVC strip from the plastic frame.



06 Install the blinds to the vehicle with cross groove countersunk head self-tapping screw provided via the installation groove.



07 After the installation. Cover up the installation groove back by the PVC strip.



08 Rotation shafts at the four corners is to adjust the tightness during the opening/closing of the blinds. If necessary, you can adjust it to suit your requirements.

