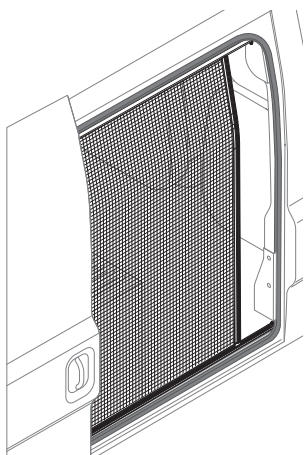


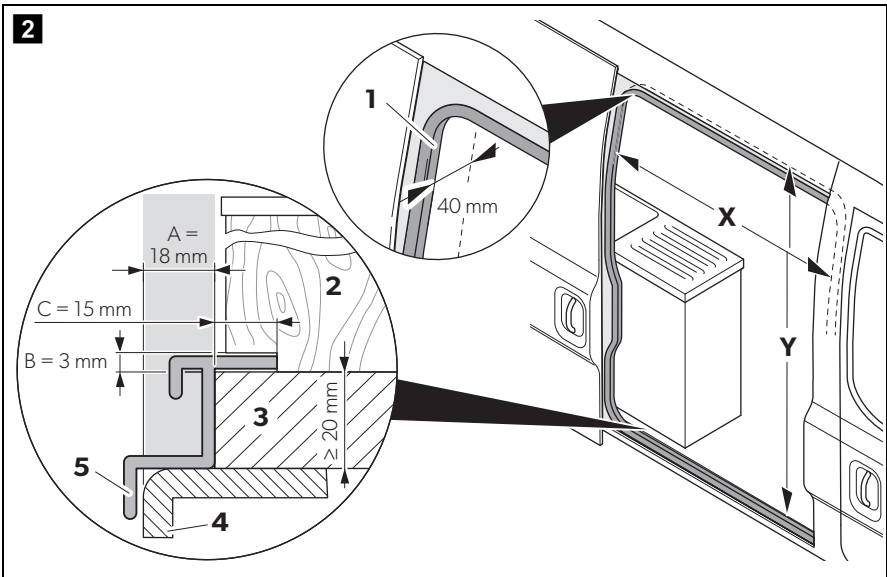
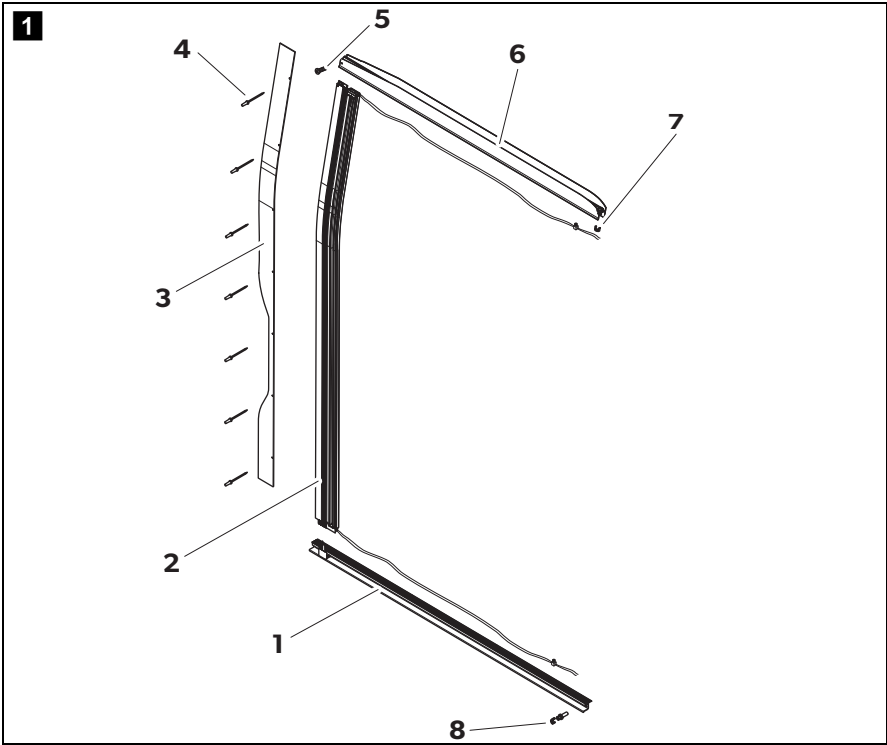
↔ **DOMETIC**

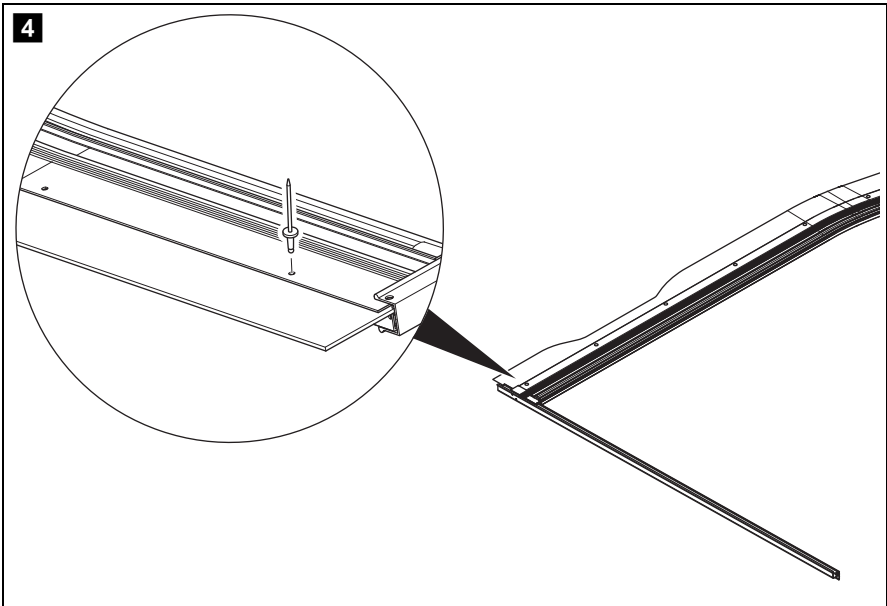
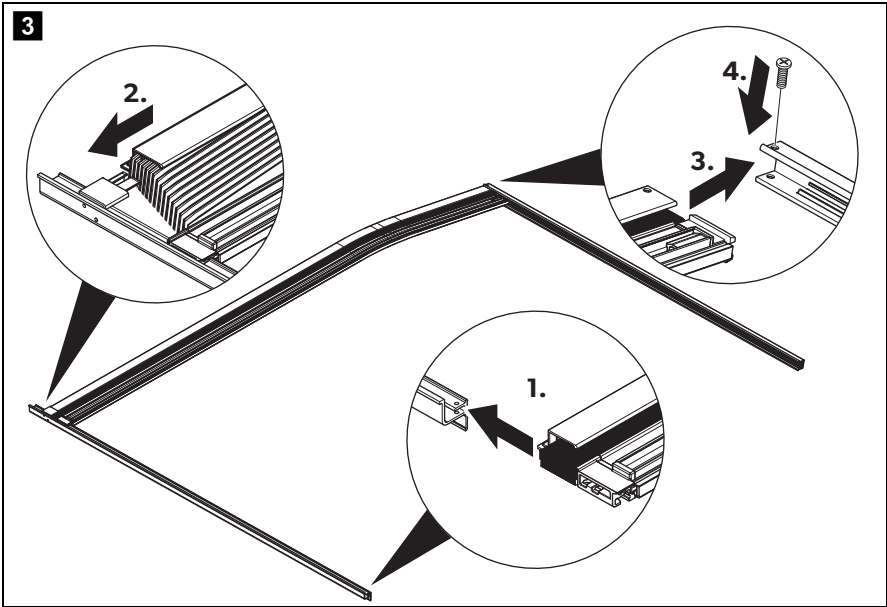
WINDOWS & DOORS BLINDS

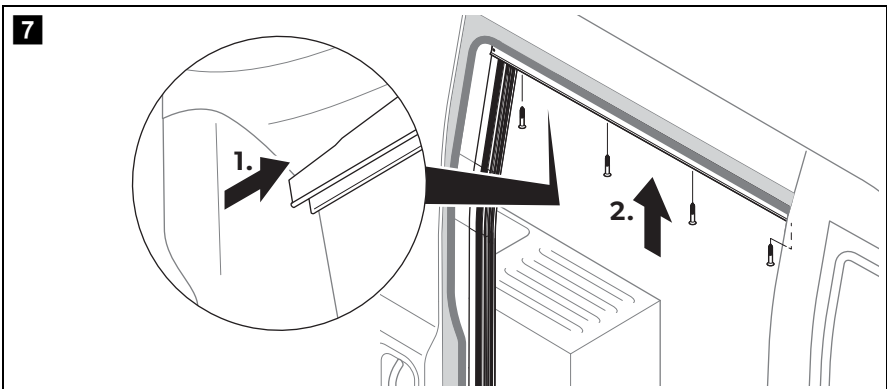
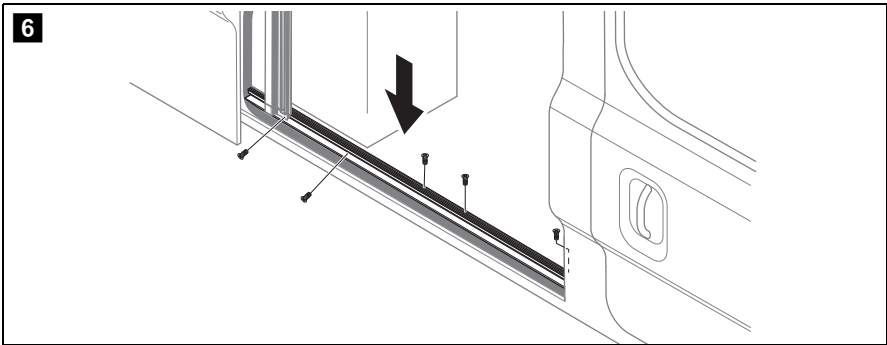
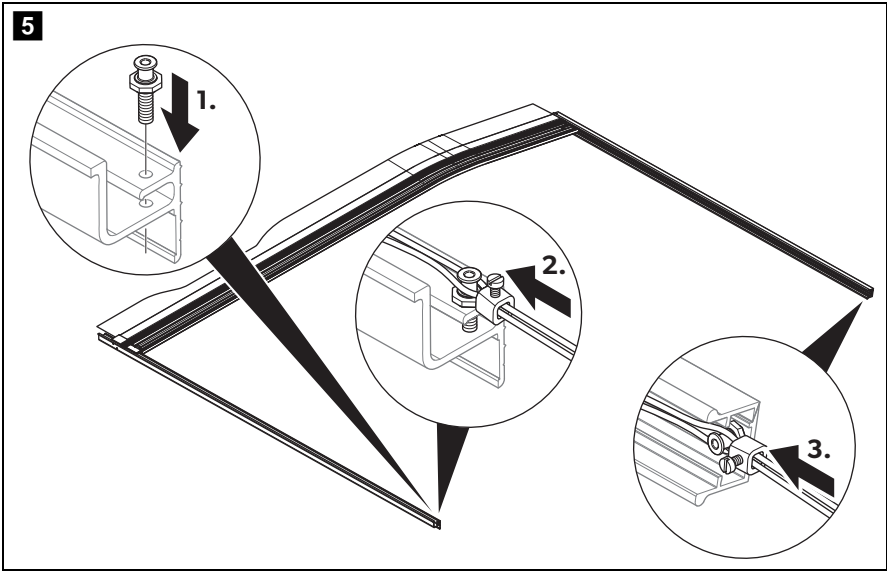


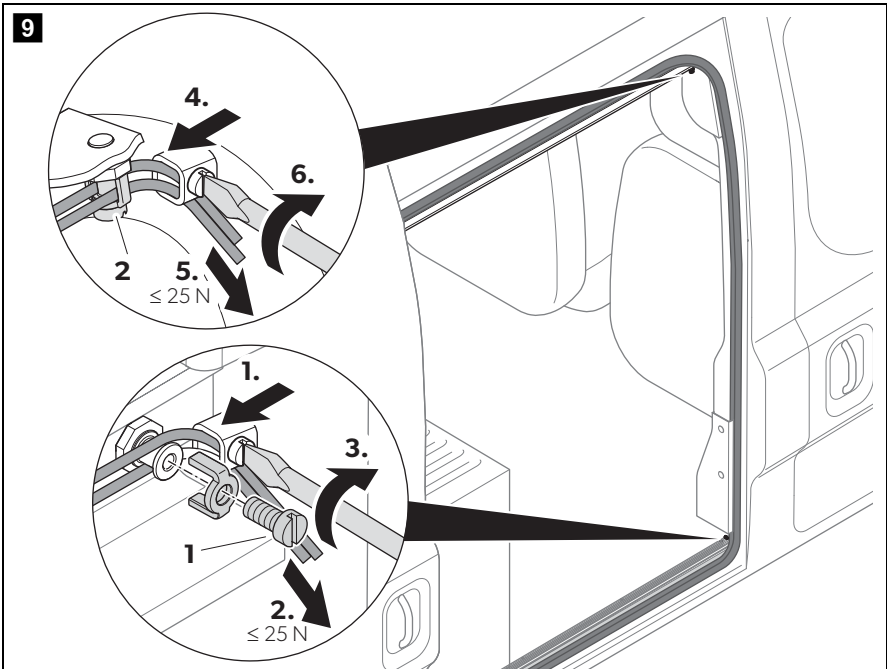
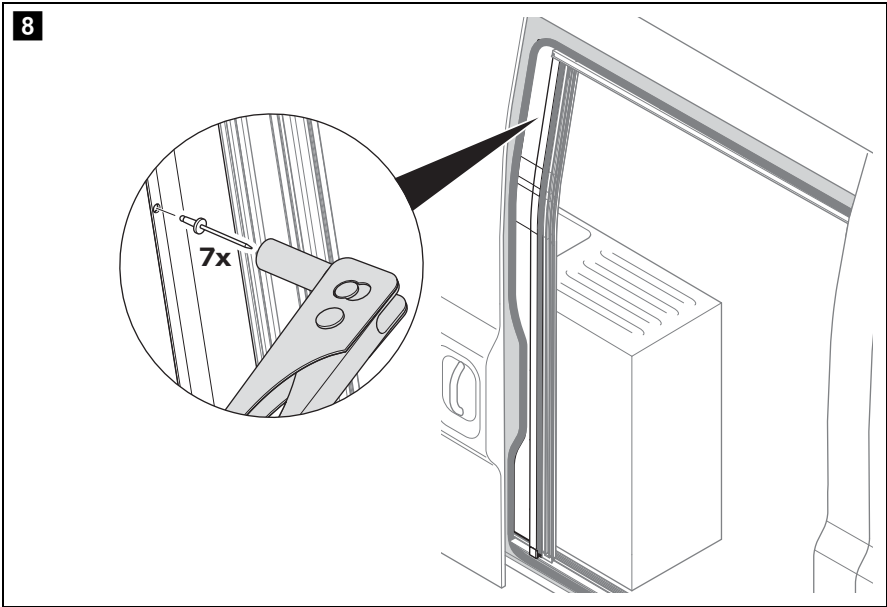
FlyTec FT200

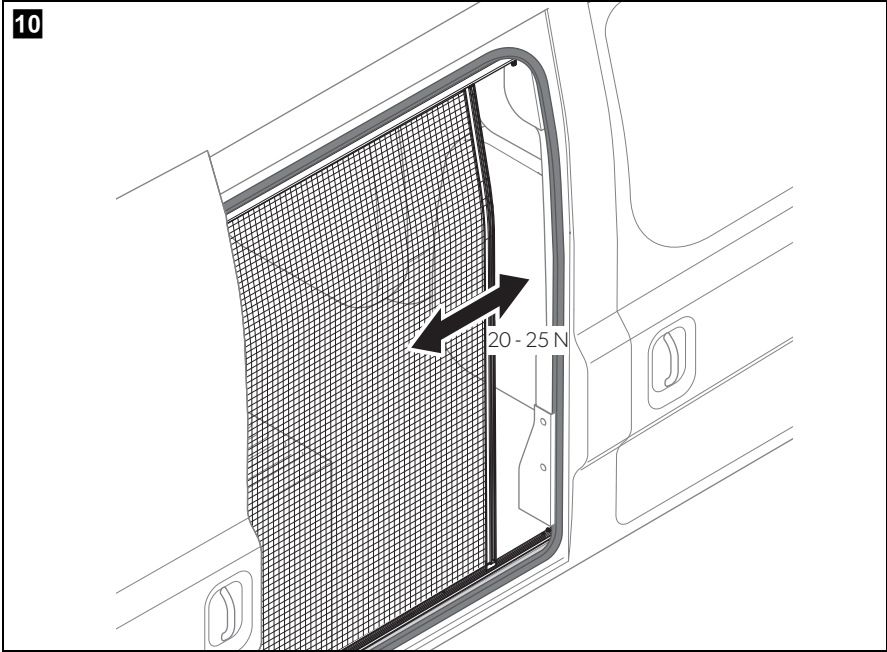
EN	Flyscreen for sliding doors Operating manual	8
DE	Insektenschutz für Schiebetüren Bedienungsanleitung	15
FR	Moustiquaire pour portes coulissantes Notice d'utilisation	23
ES	Protección contra insectos para puertas correderas Instrucciones de uso	31
PT	Proteção contra insetos para portas deslizantes Manual de instruções	39
IT	Zanzariera per porte scorrevoli Istruzioni per l'uso	47
NL	Hor voor schuifdeuren Gebruiksaanwijzing	55
DA	Net til skydedøre Betjeningsvejledning	63
SV	Insektskydd för skjutdörrar Bruksanvisning	71
NO	Insektbeskyttelse for skyvedører Bruksanvisning	79
FI	Hyttysuojaja liukuoviin Käyttöohje	86
RU	Москитная сетка для сдвижных дверей Инструкция по эксплуатации	93
PL	Ochrona przed insektami dla drzwi przesuwanych Instrukcja obsługi	101
SK	Protihmyzová sieťka pre posuvné dvere Návod na obsluhu	109
CS	Sítí proti hmyzu na posuvné dveře Návod k obsluze	117
HU	Rovarvédő tolóajtókhöz Használati utasítás	124











Please read this instruction manual carefully before first use, and store it in a safe place. If you pass on the product to another person, hand over this instruction manual along with it.

Contents

1	Explanation of symbols	8
2	Safety instructions	8
3	Scope of delivery	9
4	Intended use	9
5	Installing the flyscreen	10
6	Using the flyscreen	13
7	Cleaning and maintenance	13
8	Warranty	14
9	Disposal	14
10	Versions	14

1 Explanation of symbols



NOTICE!

Indicates a situation that, if not avoided, can result in property damage.



NOTE

Supplementary information for operating the product.

2 Safety instructions

Please observe the safety instructions and stipulations issued by the vehicle manufacturer and service workshops.

The manufacturer accepts no liability for damage in the following cases:

- Faulty assembly or connection
- Damage to the product resulting from mechanical influences

- Alterations to the product without express permission from the manufacturer
- Use for purposes other than those described in the operating manual

**NOTICE!**

- If you do not have sufficient technical knowledge for installing components in vehicles, you should have a specialist install the flyscreen in your vehicle.
- Check whether the dimensions of the flyscreen fit your vehicle.
- Installation of the flyscreen requires two people.

3 Scope of delivery

No. in fig. 1, page 3	Quantity	Description
1	1	Skirting board
2	1	Cassette profile with flyscreen and guide cables
3	1	C pillar cover
4	7	Blind rivet (4 x 8 mm with stainless steel mandrel)
5	1	Fastening screw M5 x 30 mm and M5 nut
6	1	Guide rail above
7	1	Safety clip and screw M2.5 x 6
8	1	Deflection screw M4 with safety clip and screw M2.5 x 6
-		Installation and operating manual

The screws for fastening on the vehicle are not included in the scope of delivery.

4 Intended use

The Dometic FlyTec FT 200 is a flyscreen for sliding doors on camper vans which can be slid or folded horizontally. For available versions see the table, page 14.

5 Installing the flyscreen

5.1 Notes on installation

- Before installing the flyscreen, check whether any vehicle components could be damaged by the installation of the flyscreen (such as cupboards).
- For safety reasons, note the location of existing wiring harnesses, wires and other components within the installation area, in particular those which are not visible, when installing the flyscreen (when drilling or screwing, etc.).

5.2 Preparing the vehicle

Measuring the opening (fig. 2, page 3)

Please observe the following instructions when measuring:

- The installation opening should not have been made smaller through added strips, coverings, fixtures, etc.
- The installation opening must have the minimum width of X and minimum height of Y:

FlyTec version (ref. no.)	Minimum width X	Minimum height Y
9104117297 and 9104117296	1298 mm	1765 mm
9104117387 and 9104117388	1128 mm	1492 mm

- Behind the rear sealing of the door (1), there needs to be a minimum of 40 mm space for the flyscreen to be installed.
- There needs to be a space with a width of A = 18 mm between the outer edge of the bodywork floor (4) and fitted cabinets (2) (e.g. kitchen).
- The skirting board (5) needs the following space:
 - There needs to be a space with a width of A = 18 mm between the outer edge of the bodywork floor (4) and the edge of the interior fittings base (3).
 - A space with a height of B = 3 mm and a depth of C = 15 mm needs to be available from the edge of the interior fittings base (3).

You may need to adapt fitted cabinets (2) and the interior fittings base (3).

- The flyscreen must be screwed directly to the sheet-metal bodywork at the top and not just on the panelling or the interior fittings. It is usually sufficient to screw it on to the base of the interior fittings.

- Measure the installation opening in your vehicle and check whether the dimensions of the flyscreen fit your vehicle.

Trimming the opening (depending on the vehicle)

- If necessary, remove add-on parts that interfere (such as bottom end strips or bodywork) in the installation opening.

To be able to install the skirting board (fig. **1**, page 3) flush, you may need to trim the existing fixtures (such as floors or cabinets).

- Mark the following (fig. **2**, page 3):
 - Size A = 18 mm (width of the bottom part of the skirting board), measured from the edge of the sheet-metal bodywork
 - Size B = 3 mm (height of the skirting board).
- If necessary, trim the existing fixtures with a suitable tool, such as an oscillating saw.
- Smooth and clean the cut edges.

5.3 Pre-installing the rails

Cassette profile, skirting board and upper guide rail

The cassette profile, skirting board and upper guide rail must be assembled lying on the ground (fig. **3**, page 4) before being placed in the vehicle.

- Check whether the cover profile can be inserted between the C pillar and interior fittings. You may need to adapt the contour by trimming.
- Guide the lower slider of the handle strip along with the cassette profile into the skirting board.
- Pull the cassette and handle strip apart by a bit and then slide the cassette profile onto the nose on the skirting board.
- Secure the cassette profile with the screw (M5 x 30 mm) and M5 nut on the upper guide rail.
- Insert the cover for the C pillar into the cassette so that the drill holes are located one above the other and secure the two components with three blind rivets (4 x 8 mm with stainless steel mandrel) without riveting them (fig. **4**, page 4).
- Secure the deflection screw M4 (fig. **5** 1, page 5) to the skirting board.
- Fit the guide cables into the bottom and top deflection screw (fig. **5** 2 and 3, page 5).

**NOTICE! Risk of breaking the lower plastic slider**

Be careful when you are lifting and positioning the flyscreen and do not bend or tilt the skirting board.

- ▶ Have two people carefully lift the pre-assembled flyscreen and position it in the vehicle.

Adjusting the top guide rail

- ▶ Check whether the contour and position of the upper guide rail fit the vehicle (see enlarged inset in fig. **7**, page 5). You may need to adjust the upper guide rail by cutting the two upper legs.

5.4 Securing the flyscreen in the vehicle**NOTICE!**

- Choose suitable screws depending on the floor and roof construction.
- Make sure that you do not drill through the floor and roof.

Securing the skirting board and upper guide rail

- ▶ Align the position of the cassette profile perpendicular to the skirting board and the upper guide rail.
- ▶ Secure the skirting board to the bottom plate (fig. **6**, page 5) with five counter-sunk screws (Ø 4 mm).
- ▶ Secure the upper guide rail to the vehicle (fig. **7**, page 5) with four countersunk screws (Ø 4 mm).

5.5 Completing installation**Riveting the cassette profile with the cover profile for the C pillar (fig. **8**, page 6)**

- ▶ Put all the blind rivets (4 x 8 mm with stainless steel mandrel) through the drill holes and rivet the components using a hand riveter.

Tensioning the guide cables



NOTICE!

The tension of the cables affects the guidance and smooth running of the handle strip. By changing the tension of the upper and lower cable, you can adjust the parallel orientation of the handle strip to the right door edge. Do not tension the cables more than 25 Newton.

- Tension the guide cables on the deflection screws on the skirting board and the top guide rail (fig. **9**, page 6).
- Secure the safety clips onto the deflection screws each with a screw (M2.5 x 6 mm) (fig. **9** 1 and 2, page 6).

6 Using the flyscreen



NOTICE! Beware of damage!

The sliding door of the vehicle may be closed only when the flyscreen is fully open.

Closing the flyscreen

- Pull the handle strip on the flyscreen to close the flyscreen (fig. **10**, page 7).

Opening the flyscreen

- Pull the handle strip on the flyscreen to open the flyscreen (fig. **10**, page 7).

7 Cleaning and maintenance



NOTICE! Damage hazard

Do not use sharp or hard objects or cleaning agents for cleaning as these may damage the product.

- Occasionally clean the product with a damp cloth.
- Spray the guide rails on the sliding surfaces periodically with small amounts of silicone spray to achieve the easiest possible sliding of the cassette profile in the guide rails.

8 Warranty

The statutory warranty period applies. If the product is defective, please contact the service partner in your country (see back page).

Our experts will be happy to help you and will discuss the warranty process with you in more detail.

9 Disposal

- Place the packaging material in the appropriate recycling waste bins wherever possible.



If you wish to finally dispose of the product, ask your local recycling centre or specialist dealer for details about how to do this in accordance with the applicable disposal regulations.

10 Versions

Version	Dimensions	Ref. no.
Version in direction of travel on the right for Fiat Ducato, Citroën Jumper, Peugeot Boxer from model year 2006, higher version	1298 x 1765 mm	9104117297
Version in direction of travel on the left for Fiat Ducato, Citroën Jumper, Peugeot Boxer from model year 2006, higher version	1298 x 1765 mm	9104117296
Version in direction of travel on the right for Fiat Ducato, Citroën Jumper, Peugeot Boxer from model year 2006, lower version	1128 x 1492 mm	9104117387
Version in direction of travel on the left for Fiat Ducato, Citroën Jumper, Peugeot Boxer from model year 2006, lower version	1128 x 1492 mm	9104117388