

*A state of the art  
Oil Heater for  
the 21st Century*

## FEATURES

- Easy to use diagnostic electronic controls with LED display
- Fully tested and approved to OFTEC and EC standards
- Complies with section L 2002 Building Regulations
- Suitable for use on salt water pools
- UK based technical expertise
- Designed to run with high efficiency, clean combustion and low noise level
- Pre-plumbed and pre-wired for ease of installation
- All Models fitted with Riello burners
- Optional balanced flue kits, left, right or rear available for all models (28 sec Kerosene only)
- Optional vertical balanced flue (no ventilation required)
- Optional outdoor installation kit
- SPCOHMIK - Multiple pool heater load share option. Kit required.
- Sizes: 110,000 BTU / 32 kW  
180,000 BTU / 52 kW  
220,000 BTU / 65 kW  
280,000 BTU / 82 kW  
(All nominal input ratings)

# Certikin

## SWIMMING POOL & SPA OIL HEATERS

COH110 • COH180 • COH220 • COH280



*The most comprehensive oil fired  
pool and spa heater on the market.*

*Certikin's oil fired swimming pool  
and spa heater has been designed  
and manufactured to provide both  
ease of installation, and highly  
efficient, reliable performance.*



Manufactured  
in the UK



## OIL FIRED HEATERS



### Controls

A state of the art electronic control panel created especially for oil pool heating and central heating applications which is easy to use and includes an accurate display of pool temperature. The diagnostic control panel includes a pressure gauge and LED lights to indicate everything from the boiler being turned on to burner lockout.

Four accurate thermostats control the pool water temperature, the boiler temperature, the safety high limit and the automatic by-pass (not fixed). Condensation inside the water jacket is minimised to maximise the operating life of the boiler.

### Plumbing

The heater comes complete, pre-plumbed and pressure tested resulting in ease of installation and peace of mind for the customer. A high efficiency counterflow water to water heat exchanger is used for pool water heating. System inhibitor is supplied with every heater.

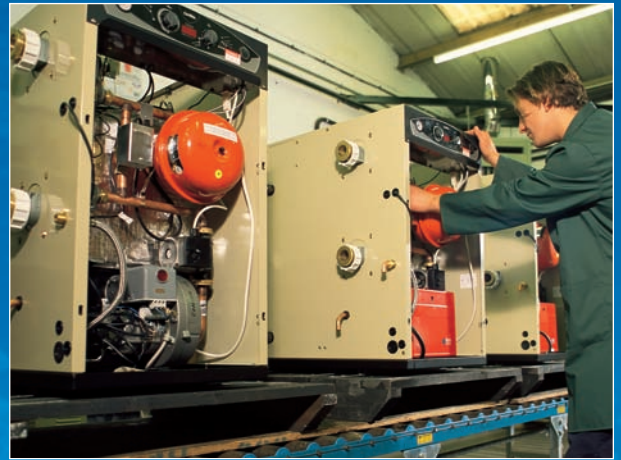
### Connections

All connections to the heater are made externally on the left hand side of the cabinet.

The connections are as follows:

- Pool water in & out - 1½" plastic pipe.
- Oil - 10mm compression fitting with filter.
- Sealed system pressure relief valve.
- Sealed system fill / drain point complete with filling loop and valves - 15mm.

- Electricity - Supplied with 13amp plug fitted with 5amp fuse and 2 metres of cable.
- Fire check valve - Provision is made for the addition of a fire check valve and sensor.
- Frost protection - Built in two stage.
- Pool pump overrun - via a contactor (not supplied).
- Central heating flow and return tappings.
- Flues - All gaskets and sealants including fire cement and caulking rope are supplied.
- The CCP02 pool control panel can be used with this heater.



All heaters are fully tested prior to leaving the factory. The Certikin Swimming pool Oil Heaters can be safely installed outside.

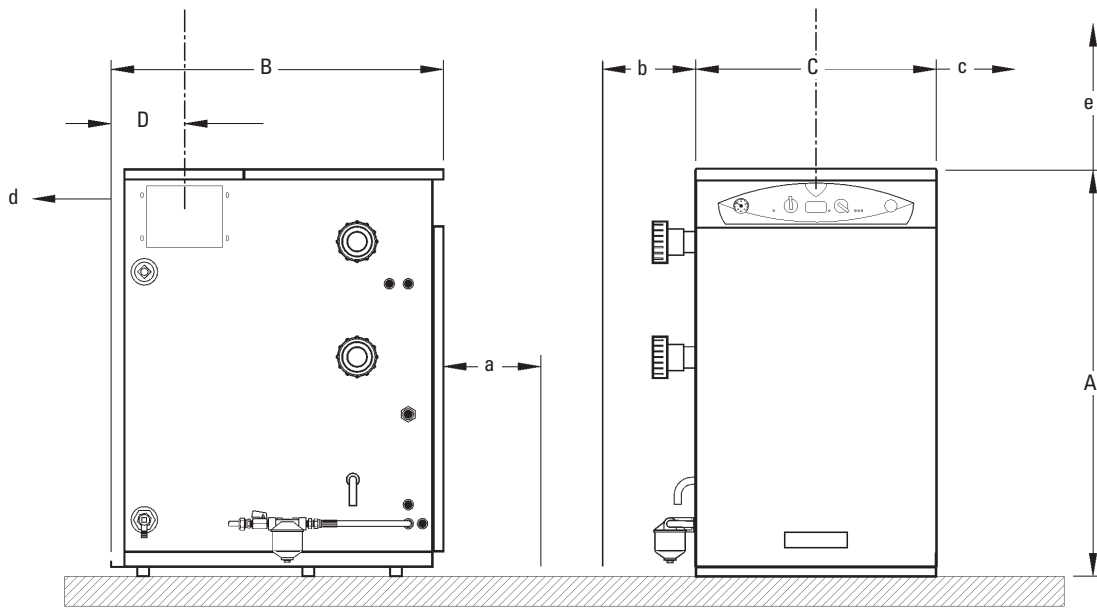
### Additional Uses

The heater is supplied set-up for use on a heating system with the required boiler controls conveniently and safely presented on the control panel. It is easily connected to heating system controls (not supplied).



Outdoor Flue

## DIMENSIONS



Model	Height	Depth	Width	Clearances							Pool Connection mm	Water Content litres	Weight Empty kg	Output BTU / kW	Efficiency %
	A mm	B mm	C mm	D mm	Flue mm	a mm	b mm	c mm	d mm	e mm					
<b>110</b>	860	700	470	130	100	750	500	0	0	500	38 1/2"	30	130	90000 / 26.4	85
<b>180</b>	1000	725	510	170	125	750	500	0	0	500	38 1/2"	38	190	150000 / 44.0	85
<b>220</b>	1000	725	510	170	125	750	500	0	0	500	38 1/2"	38	190	175000 / 51.3	85
<b>280</b>	1100	870	590	190	150	750	500	0	0	500	38 1/2"	60	310	240000 / 70.3	85

## COMPATIBILITY CHART

Size (Nominal Input)	Fuel		Conventional Flue & Vertical Balanced Flue		Con / Flue Size	Horizontal Balanced Flue		Noise Corrected dBA
	28 sec <sup>✱</sup>	35 sec	28 sec <sup>✱</sup>	35 sec		28 sec <sup>✱</sup>	35 sec	
	110,000 (32 kW)	✓	✓	✓	✓	4" (100mm)	✓	✗
180,000 (52 kW)	✓	✓	✓	✓	5" (125mm)	✓	✗	55
220,000 (65 kW)	✓	✓	✓	✓	5" (125mm)	✓	✗	54
280,000 (82 kW)	✓	✗	✓	✗	6" (152mm)	✓	✗	65

- ✱ All heaters are set in the factory to run on 28 sec Kerosene
- All figures for levels refer to Balanced flue noise taken outside, 1 metre from the terminal.



User friendly visible safe control panel with system status diagnostic indicators constantly monitors pressure, flow, temperature and safety - Helps to eliminate unnecessary service calls. Pool temperature is clearly displayed at all times.

## WARRANTY

The unit is supplied with a 12 month warranty. *However if commissioned by an OFTEC registered Engineer this will be extended to 24 months.*

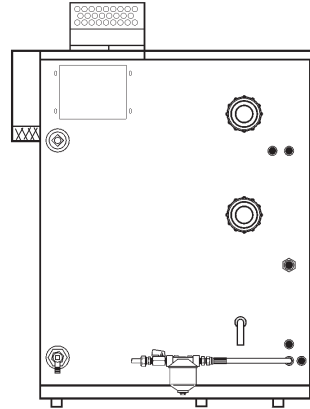
Note: This warranty is only valid when used in accordance with the SPATA standards for balanced water and other chemical parameters.

## EASE OF INSTALLATION

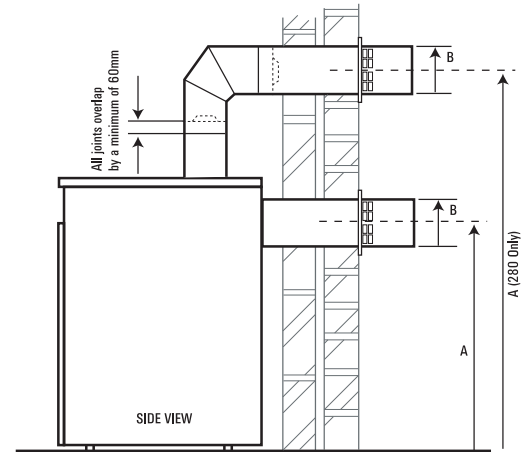
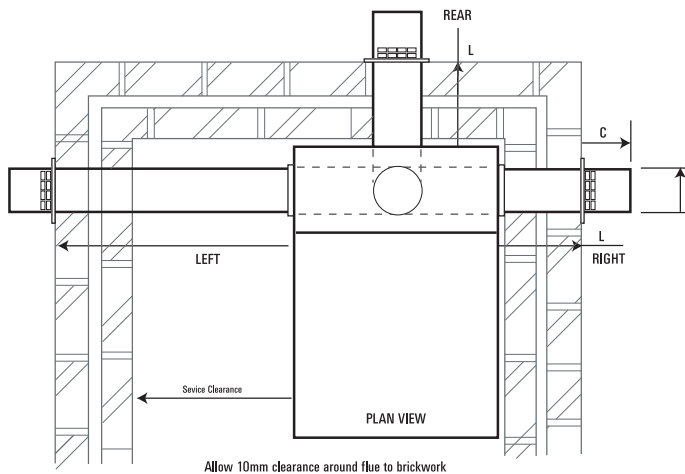
The Certikin Oil Heater has been designed with all plumbing and electrical connections on the left hand side of the unit, as shown.

## Outdoor Flue Kits

Model	Kit Number
110	SPCOHBF0V10
180	SPCOHBF0V11
220	SPCOHBF0V11
280	SPCOHBF0V3



## Horizontal Balanced Flue



mm	110	180	220	280
A	785	908	908	1320
B	142	180	180	230
C	175	200	200	225

Model	L, Length range mm			Part No:	Description
	Rear	Right	Left		
110	254 - 457	254 - 457	X	SPCOHBF1	Standard 110 Balanced Flue Kit
110	457 - 864	457 - 864	500 - 864	SPCOHBF1L	Long 110 Balanced Flue Kit
180 & 220	254 - 457	254 - 457	X	SPCOHBF2	Standard 180/220 Balanced Flue Kit
180 & 220	457 - 864	457 - 864	500 - 864	SPCOHBF2L	Long 180/220 Balanced Flue Kit
280	214 - 414	110 - 310	X	SPCOHBF3	280 Standard Flue Kit
280	674 - 874	570 - 770	1175 - 1375	Plus SPCOHBVF25E	280 Short Extension
280	1084 - 1284	980 - 1180	1585 - 1785	Plus SPCOHBVF21E	280 Long Extension

If you should require further technical information please do not hesitate to contact us.



# Certikin



08.02.08

This literature is intended as a guide. The Company reserve the right to change the specification without notice.