


Repair instruction

Description: C200S CS Electric Valve
Part number: 23709
 Look for Service Centers, Point of Sale addresses and other information on: www.thetford-europe.com

Version:	V1
Date:	08/05/2006
Tools required:	

A

C200S/CS toilet.

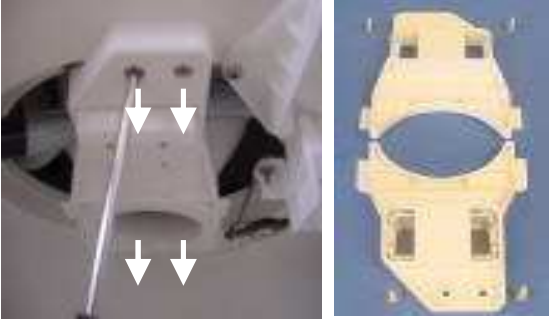
Pull the waste tank out of the Cassette toilet by lifting up the yellow clip.



B

Inside view, part is assembled with 4 screws (2 in front, 2 at the back).

Remove the two bowl retainers.



C

This bracket



is 3x assembled around the toilet bowl. Each bracket has two screws.



D

For bracket nr. 3, we advise you to use a mirror as the bracket is very difficult to see.



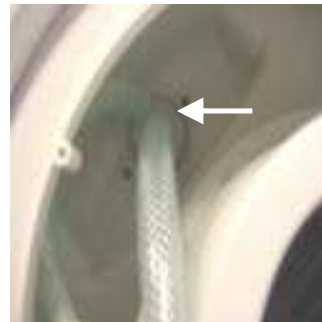
E

When all the parts are unscrewed, the toilet bowl can be taken off.



F

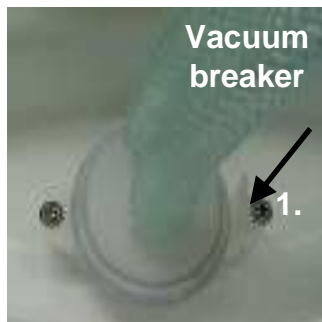
Looking into the toilet bowl, the electric valve can be found.



By taking out the vacuum breaker it is easier to replace the electric valve.

G

Press against upstanding rib (1) and the part can be taken out.



Remove the flush tube including electric valve.

H

Make the electric valve on both sides loose from the tubes and, pull both connectors loose. 1. Can be pulled off 2. Unscrew the hose barb 3. Can be pulled off



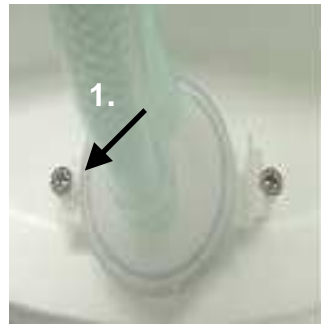
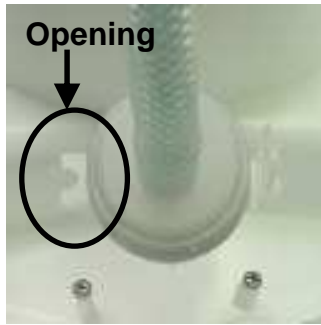
I

Replace the electric valve.

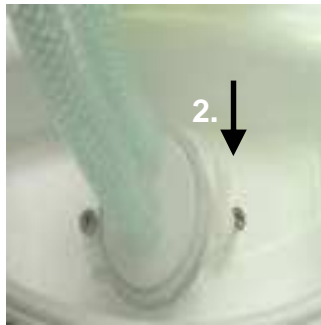


J

Place vacuum breaker back into position the following way.



K



L

Place complete water tube back into the toilet bowl.



place toilet bowl back in position.

M



Replace the three brackets.



08/05/2006

Description: C200S CS Electric Valve

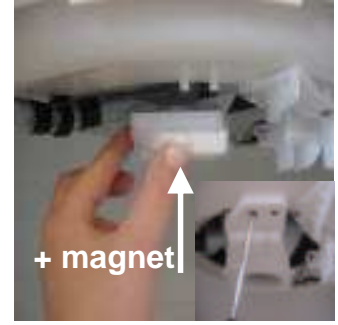
3



N

Replace the two bowl retainers.

Note : Bracket with the magnet in it, has to be placed in the front.



O

Place waste tank back into the toilet.



08/05/2006

Description: C200S CS
Electric Valve

4

